



**DEPARTMENT OF FARM MACHINERY AND POWER ENGINEERING
COLLEGE OF AGRICULTURAL ENGINEERING AND TECHNOLOGY
CCS HARYANA AGRICULTURAL UNIVERSITY
HISAR-125004, HARYANA**



Phone:01662-255447

e-mail: fpm@hau.ernet.in

<http://hau.ernet.in>

hau.machinerytesting@gmail.com

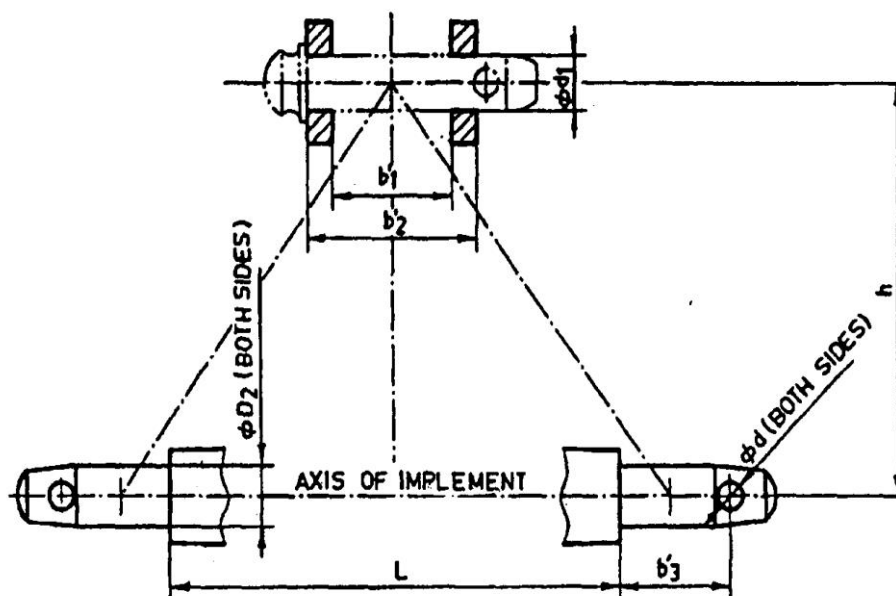
SPECIFICATION SHEET OF TRACTOR MOUNTED LEVELLER

1.0	General		:	
	Name of machine		:	
	Name and address of manufacturer		:	
	Name and address of applicant		:	
	Selling price in India		:	
2.1	Main frame:			
	a)	Constructional details	:	
	b)	No. and size of bolts (mm) for tightening square section to the Mould board frame	:	
2.2	Mould board frame:			
	a)	Constructional details	:	
	b)	Shape	:	
	c)	Size of material (mm)	:	
2.2.1	Mould board (tynes):			
	a)	Constructional details	:	
	b)	No. and size (mm)	:	
2.2.2	Side plate:			
	a)	Constructional details	:	
	b)	No. and size (mm)	:	
2.3	Mould board:			
	a)	Constructional details	:	
	b)	Size (mm)	:	
	c)	Volume of mould board (cu. m.)	:	
2.4	Cutting blade			
	a)	Material and size (mm)	:	
	b)	Beveled edge thickness (mm)	:	
	c)	Width of beveled edge (mm)	:	
	d)	No. and size (mm) of holes on the blade	:	
	e)	No., size and types of bolts for fitting blade (mm)	:	
	f)	Method of fixing	:	
2.5	Blade tilt or vertical angle device:			
	a)	Constructional details	:	
	b)	No. and size (mm) of holes on mast rear flats	:	

	c)	Hole spacing (mm)	:	
	d)	Range of blade tilt angle from ground level (GL) (degree)	:	
	e)	Size of U-channel (mm)	:	
	f)	No. and size (mm) of holes on U-channel	:	
	g)	No. and size (mm) of bolt for tightening the mast flat	:	
2.6	Horizontal angling device		:	
2.7	Pitch adjusting screw		:	
2.8	Scarifier		:	
2.9	Stabilizer kit		:	
2.10	Type of hitch and its details :			
	a)	Type and material	:	Three point linkage, MS Flat, 62.5 x 12
	b)	Shape	:	Pyramid

Specification of Hitch Pyramid As per IS: 4468-1997 (Part-I)

Sr.	Dimension (Refer Fig.1)	Description	Measurement
Upper Hitch attachments			
1	d_1	Diameter of hitch pin hole	
2	b'_1	Width between inner faces of yoke	
3	b'_2	Width between outer faces of yoke	
Lower hitch points			
4	D_2	Dia. of hitch pin	
5	b'_3	Linch pin hole distance	
6	l	Lower hitch point span	
Other dimensions			
	Diameter of linch pin hole		
7	d	For upper hitch pin	
8		For lower hitch pin	
9	h	Mast height	



Implement Hitch Attachment

3	Overall Dimensions (mm)		
	a)	Length	:
	b)	Width	:
	c)	Height	:
	d)	Mass, (kg)	:

4	Color of implement	:
----------	---------------------------	---

5	Details of Material of Construction :
----------	--

Sr.	Name of components	Material
1	Frame	Conforms
2	Strut hitch	--
3	Hitch pin	Does not conform
4	Pitch adjusting screw	--
5	Mould board frame	Conforms
6	Side plate	Conforms
7	Mould board	Conforms
8	Scarifier	--

Place:

Date:

Signature: _____

Name : _____

Designation: _____