



**DEPARTMENT OF FARM MACHINERY AND POWER ENGINEERING
COLLEGE OF AGRICULTURAL ENGINEERING AND TECHNOLOGY
CCS HARYANA AGRICULTURAL UNIVERSITY
HISAR-125004, HARYANA**



Phone:01662-255447

e-mail: fpm@hau.ernet.in

<http://hau.ernet.in>

hau.machinerytesting@gmail.com

SPECIFICATION SHEET OF TRACTOR OPERATED DISC PLOUGH

| | | | |
|-----|------------------------------------|---|--|
| 1.0 | General | : | |
| | Name of machine | : | |
| | Name and address of manufacturer | : | |
| | Name and address of applicant | : | |
| | Selling price in India | : | |
| 2.1 | Frame: | | |
| | a) Type and material | : | |
| | b) Size of angle section, mm | : | |
| | Left gang | | |
| 2.2 | Disc flange holder: | | |
| | a) Type and material | : | |
| | b) Size of angle section, mm | : | |
| 2.3 | Scraper assembly: | | |
| | a) Type and material | : | |
| | b) Number | : | |
| | c) Size of scraper (mm) | : | |
| | d) Location | : | |
| | e) Method of fixing | : | |
| | f) Adjustment | : | |
| 2.4 | Adjustment lever: | | |
| | a) Type and material | : | |
| | b) Length of shaft (mm) | : | |
| | c) Dia. of shaft (mm) | : | |
| | d) Length of threaded portion (mm) | : | |
| | e) Dia. of threaded portion (mm) | : | |
| | f) Method of fixing | | |
| | g) Adjustment | | |
| 2.5 | Furrow wheel: | | |
| | a) Number | : | |
| | b) Type and material | : | |
| | c) Size | : | |
| | d) Method of fixing | : | |
| | e) Adjustment | | |
| 2.6 | Land wheel: | | |
| | a) Number | : | |
| | b) Type and material | : | |
| | c) Size | : | |
| | d) Method of fixing | : | |
| | e) Adjustment | | |
| 2.7 | Loading platform: | | |
| | a) Type and material | : | |
| | b) Size | : | |
| | c) Method of fixing | : | |
| | d) Adjustment | : | |
| 2.8 | Loading mass: | | |
| | a) Type and material | : | |

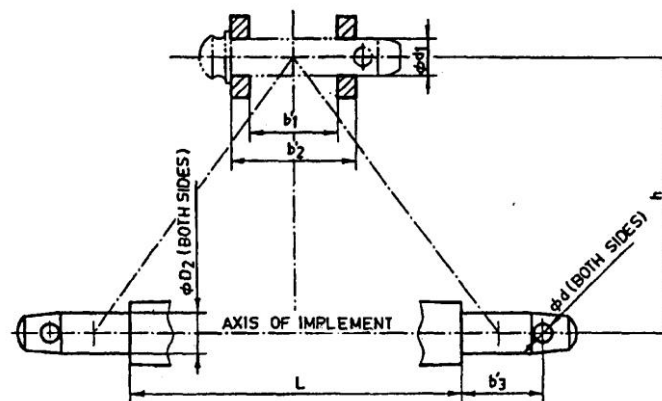
| | | | | |
|-----|----------------------|------------------|---|--|
| | b) | Size | : | |
| | c) | Method of fixing | : | |
| | d) | Adjustment | : | |
| 2.9 | Concave disc: | | | |

| Sr. | Specification | Size |
|-----|------------------------------|------|
| 1 | Type | |
| 2 | Make | |
| 3 | Material | |
| 4 | Dia. of disc (mm) | |
| 5 | Concavity (mm) | |
| 6 | Bevel angle | |
| 7 | Width of bevel edge (mm) | |
| 8 | Thickness of disc (mm) | |
| 9 | Thickness of bevel edge (mm) | |
| 10 | Type of centre hole | |
| 11 | Size of center hole (mm) | |
| 12 | Size of key hole (mm) | |
| 13 | Method of fixing | |

| | | | |
|------|--|-------------------|---|
| 2.10 | Type of hitch and its details : | | |
| | a) | Type and material | : |
| | b) | Shape | : |

Specification of Hitch Pyramid As per IS: 4468-1997 (Part-I)

| Sr. | Dimension (Refer Fig.1) | Description | Measurement |
|--------------------------------|-------------------------|-----------------------------------|-------------|
| Upper Hitch attachments | | | |
| 1 | d_1 | Diameter of hitch pin hole | |
| 2 | b'_1 | Width between inner faces of yoke | |
| 3 | b'_2 | Width between outer faces of yoke | |
| Lower hitch points | | | |
| 4 | D_2 | Dia. of hitch pin | |
| 5 | b'_3 | Linch pin hole distance | |
| 6 | l | Lower hitch point span | |
| Other dimensions | | | |
| Diameter of linch pin hole | | | |
| 7 | d | For upper hitch pin | |
| 8 | | For lower hitch pin | |
| 9 | h | Mast height | |



Implement Hitch Attachment

| | | | |
|----------|----------------------------------|---|--|
| 2.11 | Arrangement of transport | : | |
| 3 | Overall dimensions (mm) : | | |
| | a) Length | : | |
| | b) Width | : | |
| | c) Height | : | |
| | d) Mass, (kg) | : | |
| 4 | Color of implement | : | |
| 5 | Material used | | |

| Sr. | Name of components | Material |
|------------|---------------------------|-----------------|
| 1 | Frame | |
| 2 | Disc flange holder | |
| 3 | Scraper | |
| 4 | Adjustment lever | |
| 5 | Furrow wheel | |
| 6 | Land wheel | |
| 7 | Loading platform | -- |
| 8 | Cross bar /hitch | |
| 9 | Loading mass | |
| 10 | Hitch pin | |

Place:

Date:

Signature: _____

Name : _____

Designation: _____