



**DEPARTMENT OF FARM MACHINERY AND POWER ENGINEERING  
COLLEGE OF AGRICULTURAL ENGINEERING AND TECHNOLOGY  
CCS HARYANA AGRICULTURAL UNIVERSITY  
HISAR-125004, HARYANA**



Phone:01662-255447

e-mail: fpm@hau.ernet.in

<http://hau.ernet.in>

hau.machinerytesting@gmail.com

**SPECIFICATION SHEET OF CULTIVATOR (TRACTOR DRAWN)**

1.0	<b>General</b>		:	
	Name of machine		:	
	Name and address of manufacturer		:	
	Name and address of applicant		:	
	Selling price in India		:	
2.1	<b>Constructional details:</b>			
	a)	Name	:	
	b)	Type	:	
	c)	Make	:	
	d)	Serial Number	:	
	e)	Model	:	
	f)	Year of manufacture	:	
	g)	No. of tines	:	
	h)	Size of cultivator (mm)	:	
i)	Source of power	:		
2.2	<b>Frame:</b>			
	a)	Constructional details	:	
	b)	Dimensions (mm)	:	
2.3	<b>Tyne:</b>			
	a)	No of tynes	:	
	b)	Arrangement on main frame	:	
	c)	Type	:	
	d)	Material	:	
	e)	Size (mm)	:	
	f)	Length (mm)	:	
		- curved	:	
		- projected	:	
	g)	Width (mm)	:	
		- at top	:	
		- at bottom	:	
	h)	No. and size of hole on each tyne for fixing shovel to it	:	
i)	Center to center distance between the holes (mm)	:		
j)	No. and size of bolts for tightening shovel to the tyne	:		
k)	Method of fixing	:		
l)	Provision for height adjustments	:		
2.4	<b>Shovel :</b>			
	a)	No. of shovel	:	
	b)	Type	:	
	c)	Material	:	
	d)	No. and size of holes on each shovel for fixing to tyne	:	
	e)	Method of fixing	:	
2.5	<b>Hitch Pyramid:</b>			
	a)	Constructional details	:	

b)	Material	:	
c)	Size (mm)	:	

Sr.	Dimension	Description (Refer Fig.)	Dimension in mm
Upper Hitch attachments			
1	$d_1$	Diameter of hitch pin hole	
2	$b'_1$	Width between inner faces of yoke	
3	$b'_2$	Width between outer faces of yoke	
Lower hitch points			
4	$D_2$	Dia of hitch pin	
5	$b'_3$	Linch pin hole distance	
6	$l$	Lower hitch point span	
Other dimensions			
	Diameter of linch pin hole		
7	$d$	For upper hitch pin	
8		For lower hitch pin	
9	$h$	Mast height	

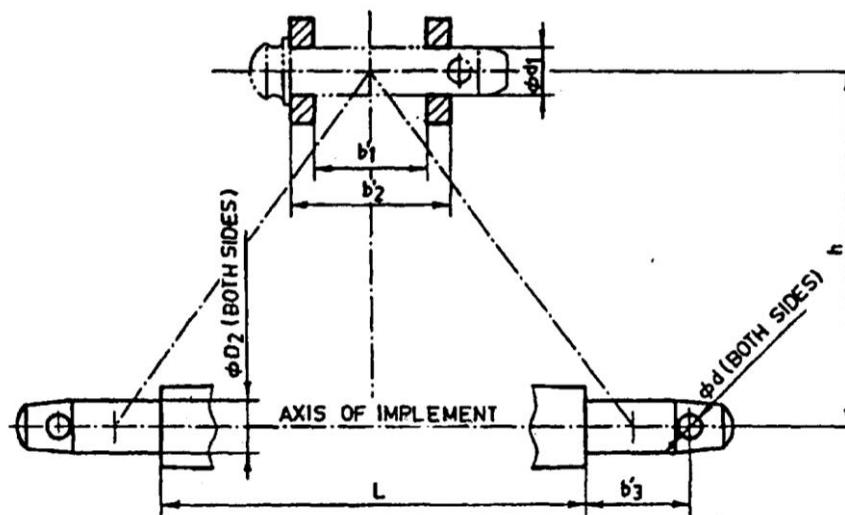


Fig. : Implement Hitch Attachment

4.3	<b>Material of construction:</b>		
	<b>Name of components</b>		<b>Material used</b>
	a)	Main frame	
	b)	Tyne	
	c)	Shovel	
d)	Hitch pyramid		

4.4	<b>Overall dimensions (mm):</b>		
	a)	Length	:
	b)	Width	:
c)	Height	:	
4.5	<b>Total mass (kg)</b>		:
4.6	<b>Color of implement</b>		:

Place:

Date:

Signature: \_\_\_\_\_

Name : \_\_\_\_\_

Designation: \_\_\_\_\_